



WORKS AVAILABLE

Morehshin Allahyari

SHE WHO SEES THE UNKNOWN

October – January 2017

TRANSFER

1030 Metropolitan Avenue
Brooklyn, NY 11211

Saturdays 12-6PM and by appointment
director@transferyallery.com



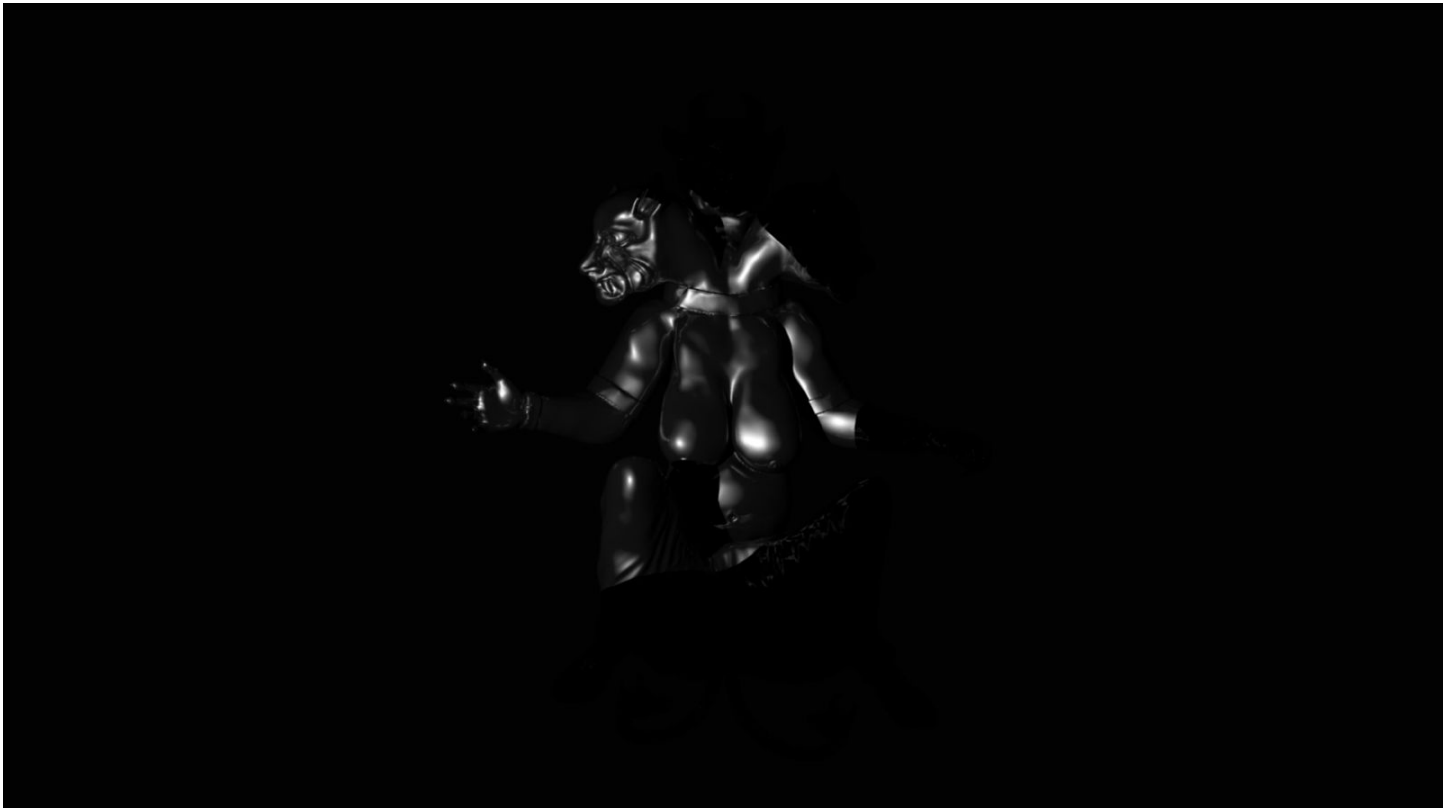
'Huma and Talismans'

3D Printed Sculpture, Black Resin 12" x 6" x 5"

3 Talisman, Clear Resin 3" x 2" x 1"

Edition 3 + 2AP

2016

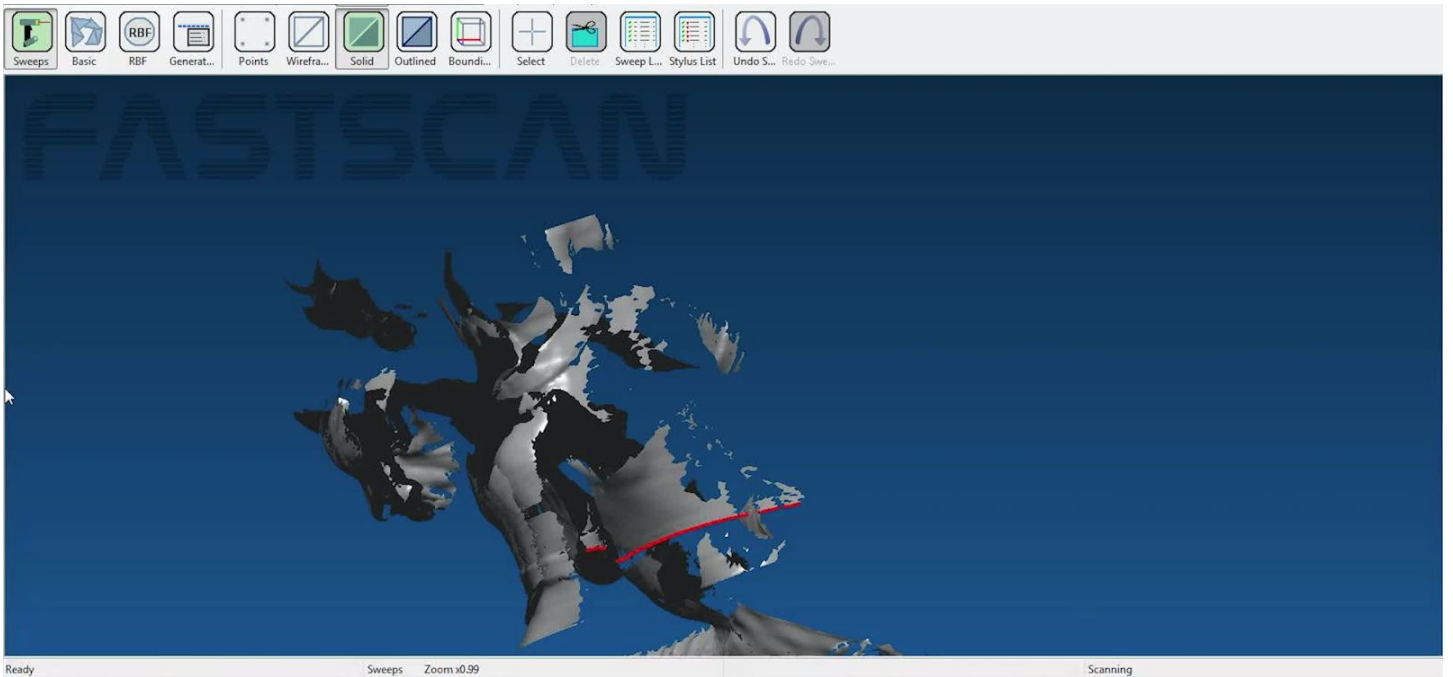


'She Who Sees The Unknown: HUMA'

HD Video – 1920 x 1280p with Audio, Single Channel

Edition 5 + 2AP

2016

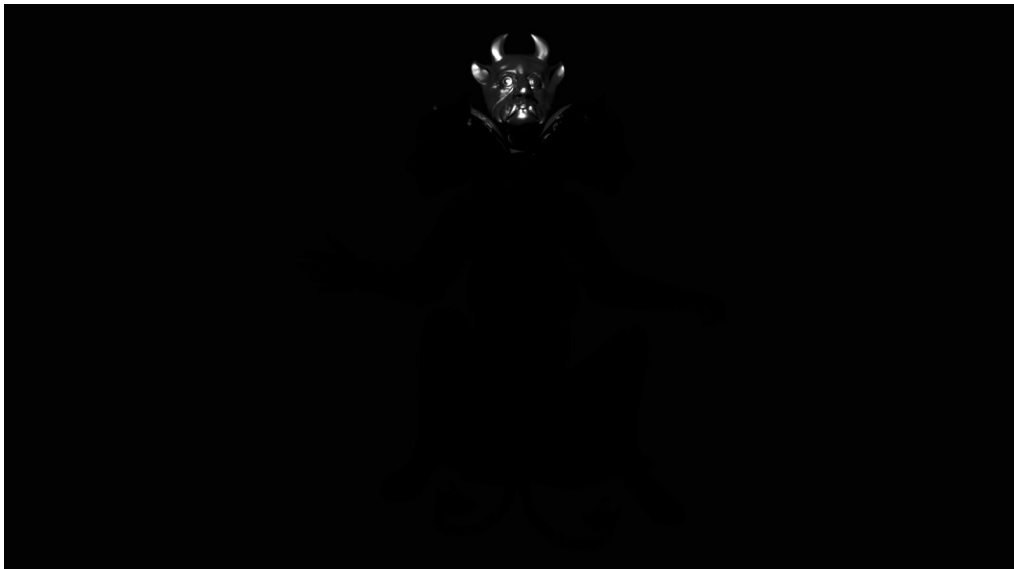


'3D Scanning Screen Capture Performance'

HD Video – 1920 x 1280p

Edition 10 + 2AP

2016



'Huma- Re-Imagining'

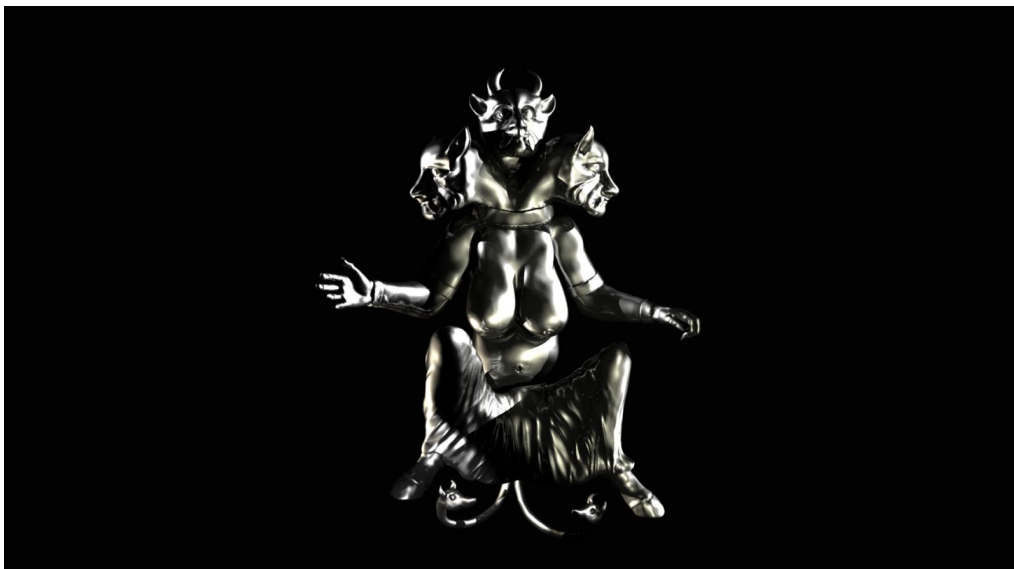
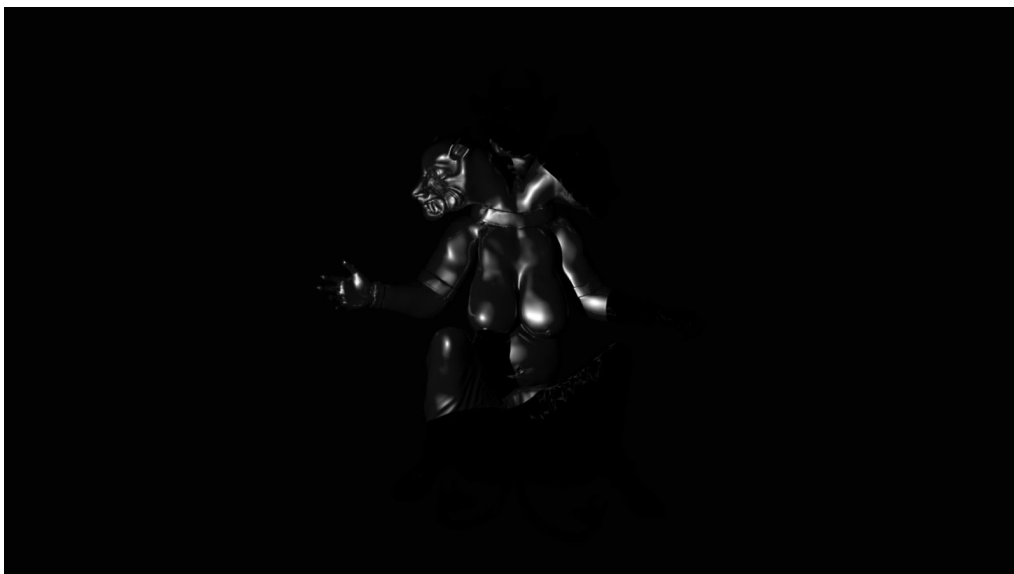
Stills from 'She Who Sees the Unknown: HUMA'

Archival Print on Aluminum

34" x 19"

Edition of 3 + 2AP

2016



TRANSFER explores the friction between networked studio practice and its physical instantiation. The gallery supports artists working with computer-based practices to realize aggressive installation projects within our walls, and exhibits internationally at art fairs to engage the growing market for media-based artworks.

TRANSFER Gallery :: 1030 Metropolitan Ave Brooklyn, NY 11211 More info: <http://TRANSFER.gallery>